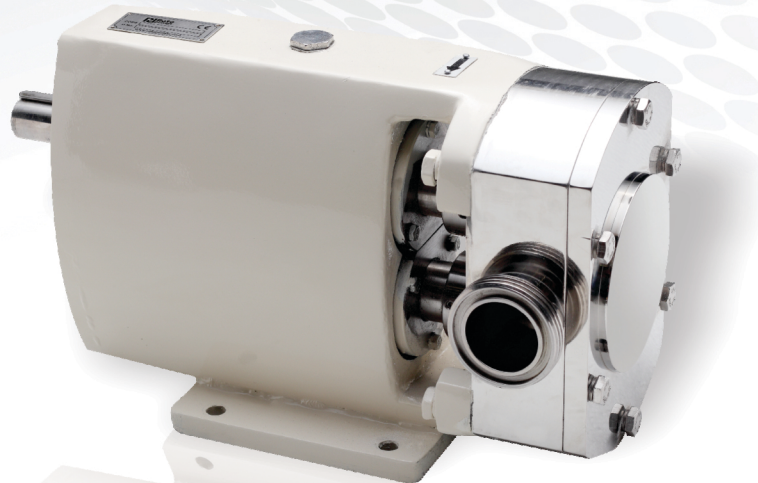


HIGH PERFORMANCE ROTARY LOBE PUMPS



Features

- Capacity upto 350 LPM (93 US GPM)
- Discharge pressure upto 7 bar (7 kg/cm²)
- Suitable for low to high viscosities
- Gentle pumping
- Designed for easy cleaning with CIP processes
- Ensures smooth flow
- Dry running capability
- Hygienic design
- Low noise and easy maintenance

Hygienic Applications



Bakery



Wine & Beverages



Canned Foods



Confectionery



Cosmetics



Dairy



Meat Packing



Pharmaceutical

Industrial Applications



Chemical



Polymers



Paper



Paint & Adhesives



Wastewater



Biogas

Design Features

AISI 316 Stainless Steel Cover

- Quick and easy dismantling
- Easy access to seals
- Easy to clean
- Flat reversible cover

TRI-LOBE Rotor

AISI 316 Stainless Steel

- Easy to mount
- Accurate positioning with no risk of mechanical error
- Hygienic
- No retention zone

Rotor Screws

- 316 Stainless Steel
- Efficient locking

Splined Shaft

- Enhanced distribution of stress
- Reduced wear

Oil Level Viewing Point

- Anti-splash casing protection disc
- Drainage outlet
- Easy access to seals

All parts in contact with pumped fluid in AISI 316 stainless steel

Designed for easy cleaning with CIP process

Front-Loaded Mechanical Seals

- Reduced maintenance and downtime

Over-Dimensioned Front Bearings

- Heavy loads supported

Robust Reliable System Rear Bearings

- High speeds supported

Interchangeable Drive/Driven Shafts

Helical Gears

- More accurate synchronization
- Low noise
- Easy adjustment
- Longer lifetime

Separately Built Body and Bearing Housings

- Eliminates risk of accidental media pollution

AISI 316 Stainless Steel Body

- Standard surface finish

PERFORMANCE SUMMARY							
Pump Model	Port Size Standard	Displacement @100rpm		Max. Speed (RPM)	Pressure (Kgf/cm ²)	Weight (Kg)	
		LPM	US. GPM			Horizontal Porting	Vertical Porting
RLB-100S	1"	5	1.4	1000	7	15	16
RLB-100L	1"	8	2.25	1000	7	17	18
RLB-150S	1 1/2"	12	3.38	1000	7	28	30
RLB-150L	1 1/2"	18	4.78	1000	7	30	31
RLB-200S	2"	26	7.03	1000	7	52	55
RLB-200L	2"	38	10.15	1000	7	55	58
RLB-250S	2 1/2"	55	14.64	1000	7	104	110
RLB-250L	2 1/2"	79	20.87	1000	7	109	115
RLB-300S	3"	116	30.65	600	7	150	150
RLB-300L	3"	175	44.39	600	7	158	158
RLB-400S	4"	261	68.70	500	7	258	258
RLB-400L	4"	354	93.26	500	7	264	264

MOC SUMMARY	
PARTS	MOC
Pump Chamber	SS-316
Tri-Lobe-Rotor	SS-316
Top Cover	SS-316
Shaft	SS-316
Shaft Seal	Mech, Seal
Gear	EN-24
Casing	CI
Back Cover	CI
Bearing Spaler	CI
Bearing	SKF

ROTO PUMPS LTD.
www.rotopumps.com

Roto Pumps Ltd., India
contact@rotopumps.com

Roto Pumps Ltd., Australia
sales@rotopumps.com.au

Roto Pumps Ltd., UK
sales@rotopumps.co.uk

Roto Pumps Ltd., South Africa
sales@rotopumps.co.za

Roto Pumps North America Inc, Ltd., USA
info@rotopumpsna.com